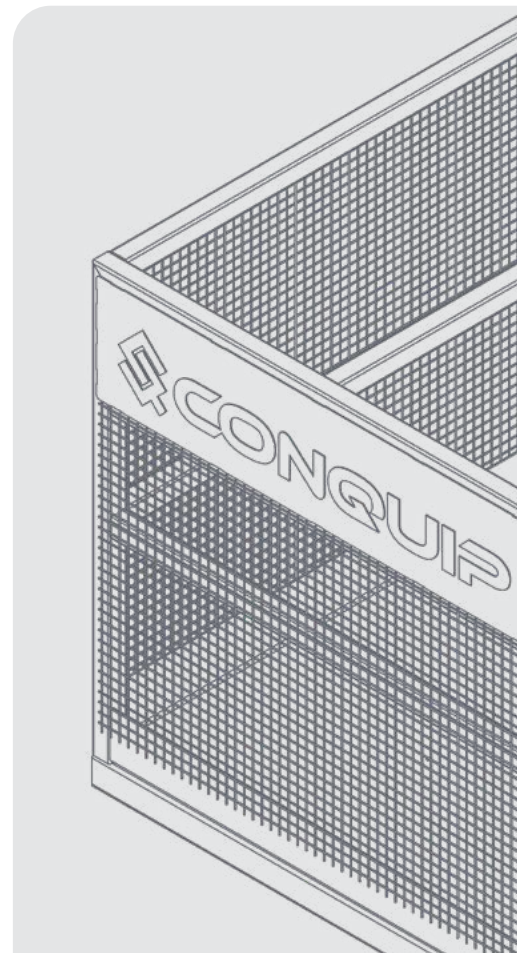


USER GUIDE

GOODS CAGE



DISCLAIMER

Do not attempt to handle or operate this equipment before you have received sufficient training. Before use, operatives must have carried out all checks featured on the Visual Inspection Sheet on page 15. It is imperative that you have read the General Safety Instructions on page 16 and sufficiently familiarised yourself with the Operational Procedures in this document.

Note that this item is compliant only to the standards specified in this User Guide and it is therefore the duty of the responsible person(s) to review and ensure compliance.

CONTENTS

PRODUCT INFORMATION

INTRODUCTION	04
SPECIFICATION	05
PARTS DIAGRAM	07

INTENDED USE

LIFTING AND CARRYING	12
----------------------	----

OPERATIONAL PROCEDURES

IMPORTANT USAGE NOTES	12
LIFTING WITH A CRANE	13
LIFTING WITH A FORKLIFT OR TELEHANDLER	14

MAINTENANCE & INSPECTION

MAINTENANCE REGIME	16
VISUAL INSPECTION SHEET	17

GENERAL SAFETY INSTRUCTIONS

SAFETY INSTRUCTIONS	18
GENERAL NOTES	19

LEGAL

TERMS AND CONDITIONS	20
EC DESIGN CONFORMITY	24
STANDARDS AND REGULATIONS APPLICABLE	25

INTRODUCTION

OVERVIEW

The Conquip [Goods Cage](#) is a safe, convenient method of transporting materials to and from high or low locations on site. All cages feature four lifting points for crane lifting and fork pockets for transporting with forklifts or telehandlers as standard, for easy manoeuvrability around site.

There are two standard sizes of the Goods Cage, which are available with either a gas assisted ramp or a secure gate for access. The ramped variation enables sites to load the cage using a pallet truck or sack barrow and the gated variation can be loaded with a telehandler or crane .

KEY BENEFITS

- Variety of sizes and access options for different site requirements.
- Easy loading due to front gate or fold-down ramp.
- Safe and secure method for transporting materials and equipment as the load is contained within the Cage.
- All standard Conquip Goods Cages have a Working Load Limit of 3000kg.

SPECIFICATION

THE RANGE

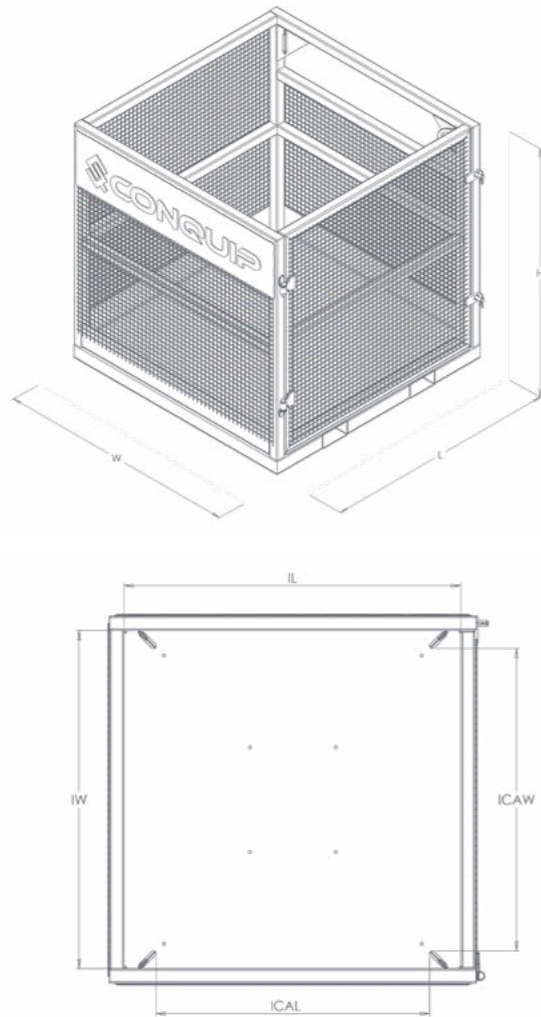


PRODUCT CODE	TYPE	WEIGHT (kg)	WLL (kg)
CA118AL-01638	Small Gate Access	270	3000
CA124AL-01658	Small Ramp Access	300	
CA118AL-03277	Large Gate Access	450	
CA124AK-03277	Large Ramp Access (Short Side)	460	
CA124AL-03277	Large Ramp Access (Long Side)	500	

*Working Load Limit

SPECIFICATION

ITEM	PRODUCT CODE
Small Goods Cage With Gate Access	CA118AL-01638
Small Goods Cage With Ramp Access	CA124AL-01658

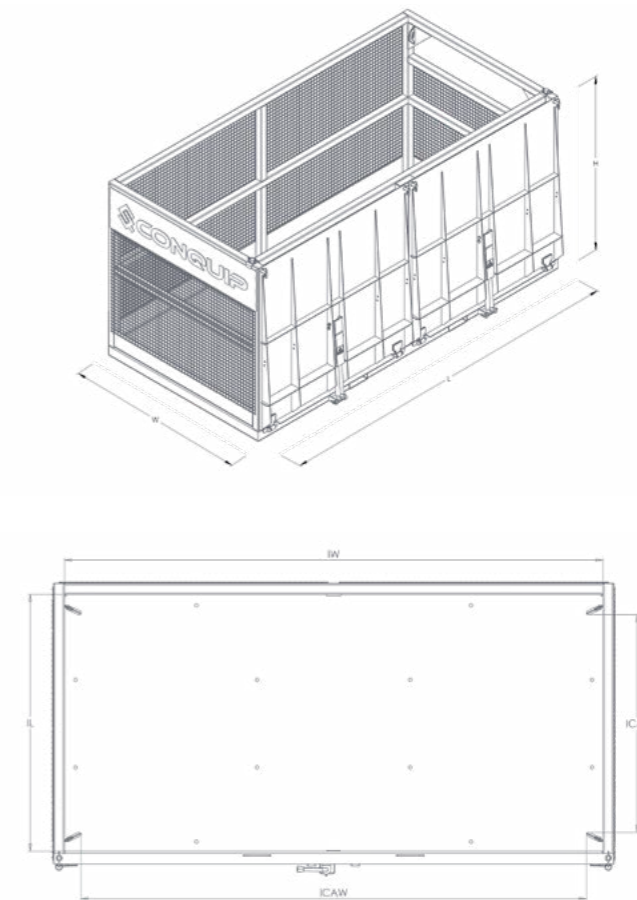


EXTERNAL				INTERNAL			
LENGTH (mm)	WIDTH (mm)	HEIGHT (mm)	FORK POCKETS (mm)	LENGTH (mm)	WIDTH (mm)	ICAL* (mm)	ICAW** (mm)
1280	1280	1280	150 x 70	1176	1180	956	1055
1360	1300	1300	150 x 70	1130	1180	956	1055

* ICAL = Internal Clear Area Length | ** ICAW = Internal Clear Area Width

SPECIFICATION

ITEM	PRODUCT CODE
Large Goods Cage Gate Access	CA118AL-03277
Large Goods Cage Ramp Access (Short Side)	CA124AK-03277
Large Goods Cage Ramp Access (Long Side)	CA124AL-03277

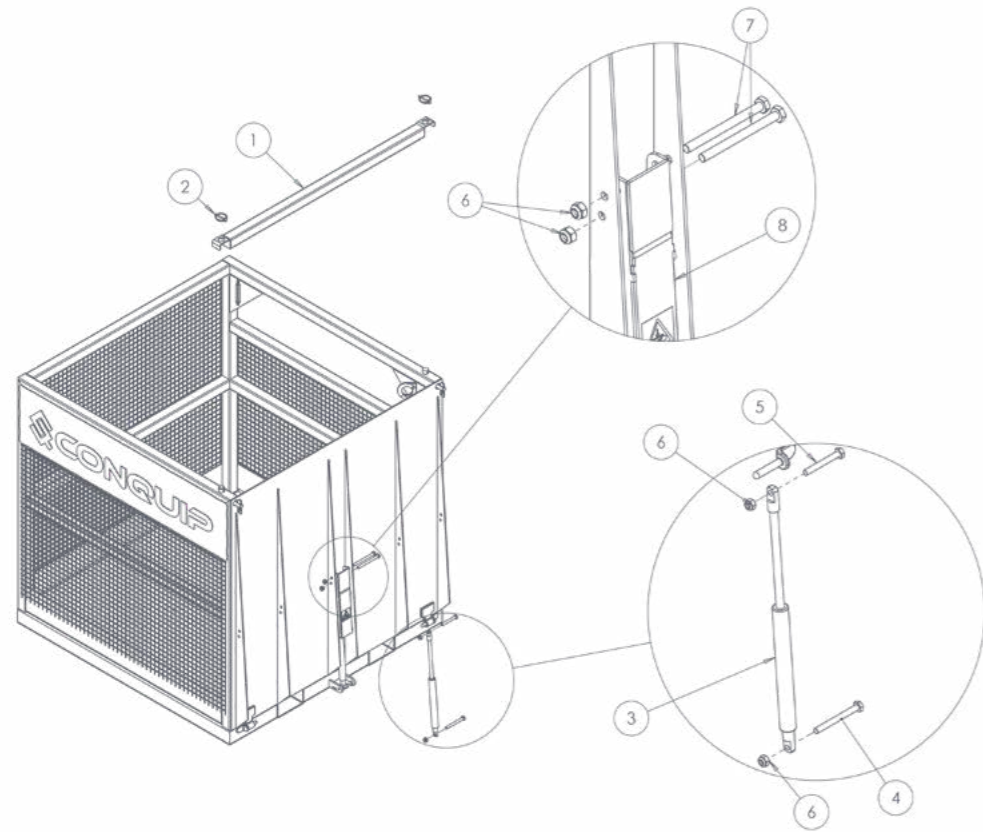


EXTERNAL				INTERNAL			
LENGTH (mm)	WIDTH (mm)	HEIGHT (mm)	FORK POCKETS (mm)	LENGTH (mm)	WIDTH (mm)	ICAL* (mm)	ICAW** (mm)
2560	1280	1280	150 x 70	2460	1173	2309	994
2645	1300	1300	150 x 70	2410	1180	2276	1055
2560	1300	1300	150 x 70	2460	1130	2309	994

* ICAL = Internal Clear Area Length | ** ICAW = Internal Clear Area Width

PARTS DIAGRAM

SMALL GOODS CAGE RAMP ACCESS

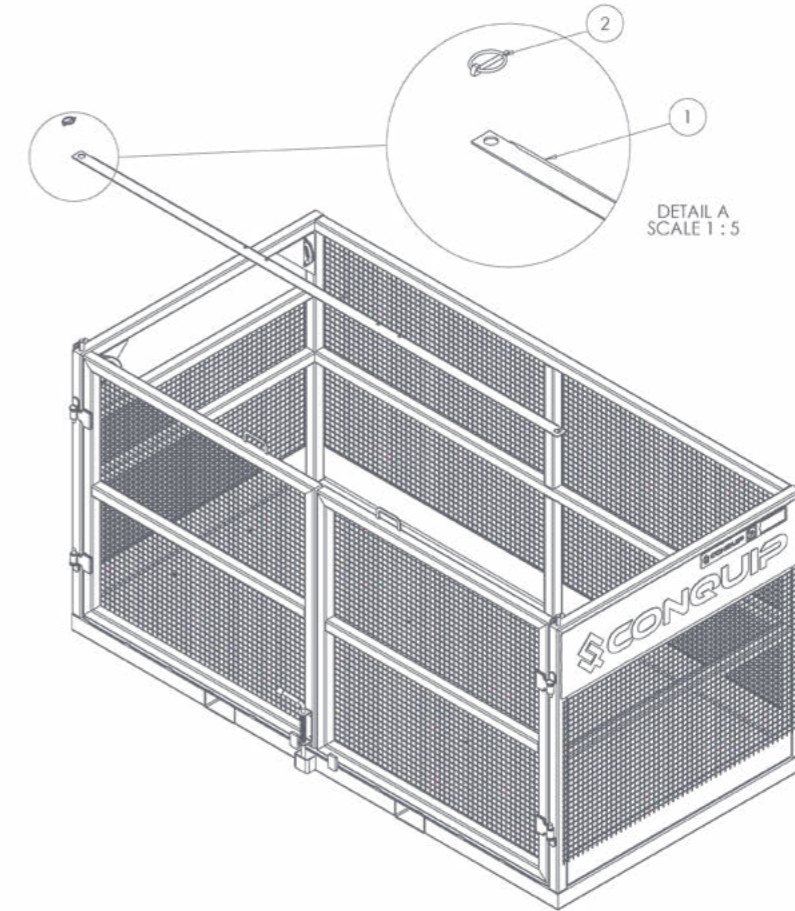


ITEM NUMBER	PART	DESCRIPTION	QUANTITY
1	ZZ190092	Spreader Beam Assembly	1
2	ZZ990009	6mm Linch Pin	2
3	ZZ960042	Gas Strut 1500N 14 x 200mm	2
4	NS800425	M10 x 100 Hex Head Set Screw	1
5	NS800917	M10 x 80 Hex Head Set Screw	1
6	NS800013	M10 Nyloc Nut	4
7	NS800480	M10x120 Hex Head Set Screw 8.8	2
8	ZZ190067	Gas Strut Pre-tension Lever Assembly	1

NOTE: These parts are for this model, they may differ for previous versions. Please contact Conquip with any queries.

PARTS DIAGRAM

LARGE GOODS CAGE GATE ACCESS

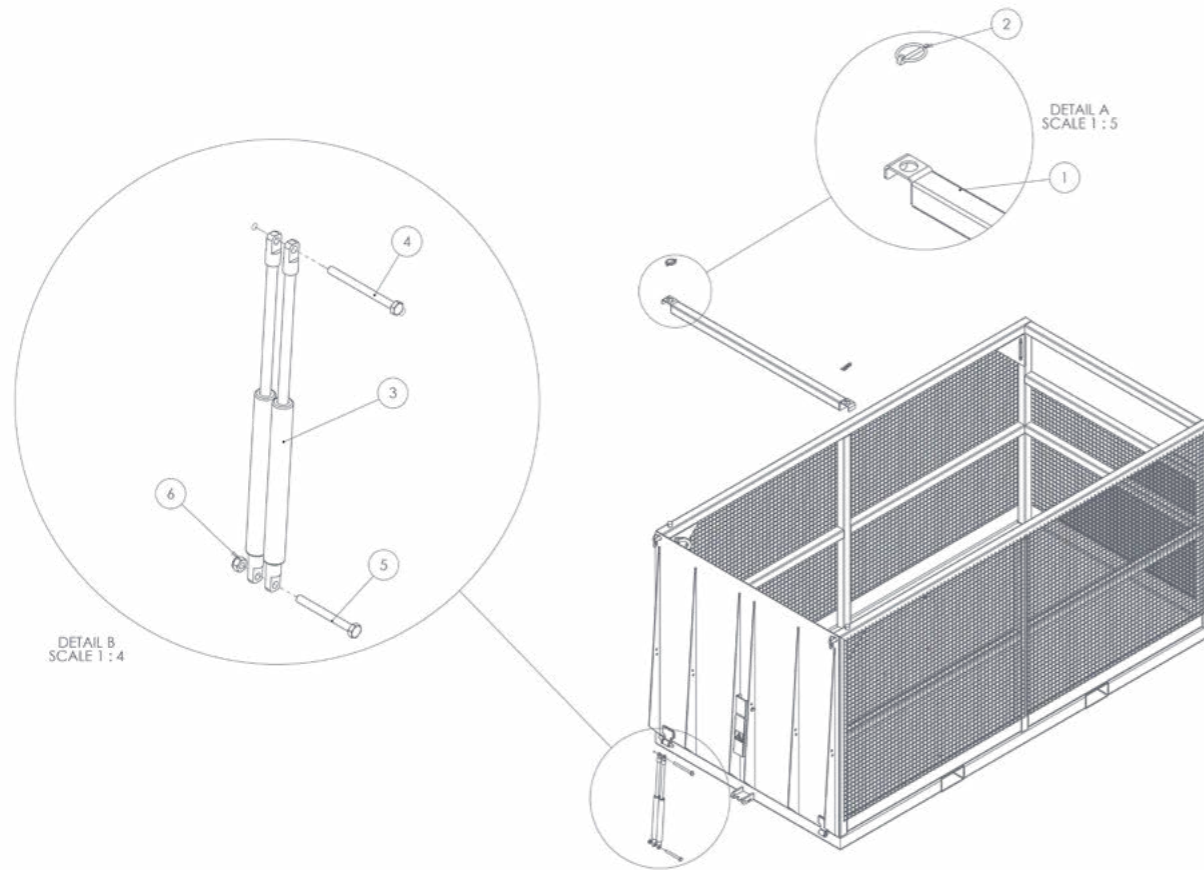


ITEM NUMBER	PART	DESCRIPTION	QUANTITY
1	ZZ190061	Spreader Beam Assembly	1
2	ZZ990009	6mm Linch Pin	2

NOTE: These parts are for this model, they may differ for previous versions. Please contact Conquip with any queries.

PARTS DIAGRAM

LARGE GOODS CAGE RAMP ACCESS (SHORT SIDE)

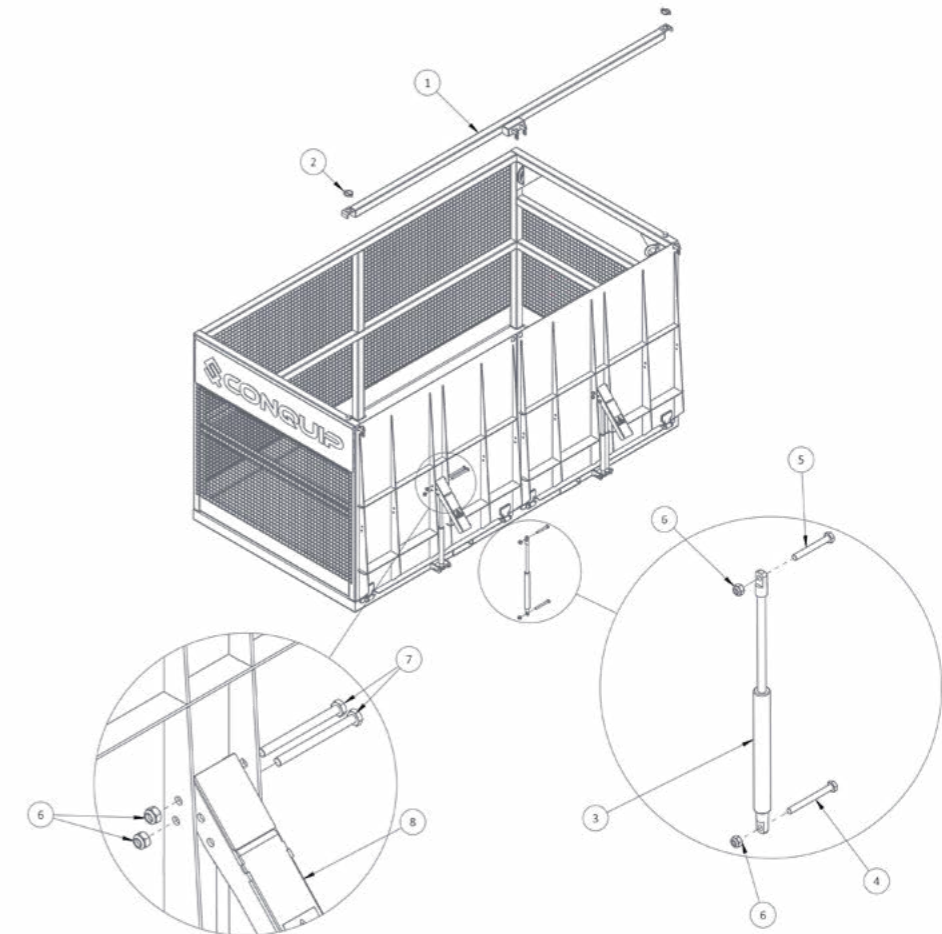


ITEM NUMBER	PART	DESCRIPTION	QUANTITY
1	ZZ190092	Spreader Beam Assembly	1
2	ZZ990009	6mm Linch Pin	2
3	ZZ960042	Gas Strut 1500N 14 x 200mm	2
4	NS800480	M10 x 120 Hex Head Set Screw	1
5	NS800425	M10 x 100 Hex Head Set Screw	1
6	NS800013	M10 Nyloc Nut	2

NOTE: These parts are for this model, they may differ for previous versions. Please contact Conquip with any queries.

PARTS DIAGRAM

LARGE GOODS CAGE RAMP ACCESS (LONG SIDE)



ITEM NUMBER	PART	DESCRIPTION	QUANTITY
1	ZZ190082	Spreader Beam Assembly	1
2	ZZ990009	6mm Linch Pin	2
3	ZZ960042	Gas Strut 1500N 14 x 200mm	4
4	NS800425	M10 x 100 Hex Head Set Screw	4
5	NS800917	M10 x 80 Hex Head Set Screw	2
6	NS800013	M10 Nyloc Nut	8
7	NS800480	M10 x 120 Hex Head Set Screw 8.8	4
8	ZZ190067	Gas Strut Pre-tension Lever Assembly	2

NOTE: These parts are for this model, they may differ for previous versions. Please contact Conquip with any queries.

INTENDED USE

LIFTING AND CARRYING

Forklifts and Telehandlers are designed to lift and carry loads. When used with an attachment, the deration chart must be adhered to.

Underslung loads may be subject to specific safety precautions including risk assessments and operator training.

OPERATIONAL PROCEDURES

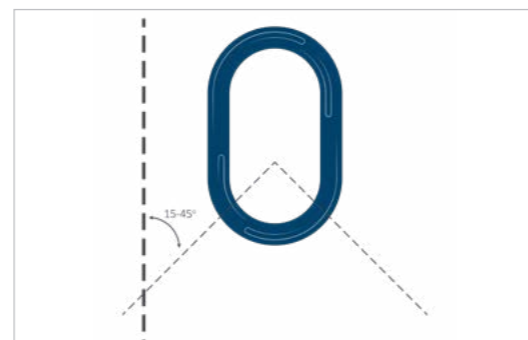
IMPORTANT USAGE NOTES

- Do not unevenly load the Goods Cage.
- Only lift the Cage by the designated four lifting points or the integral fork pockets.
- Make sure the new location is safe for personnel access before moving the load.
- For ramped cages, Conquip recommend using two operatives to lower or raise the ramp.
- Do not overload the Cage by weight or height. Loads should never protrude above the height of the Cage's sides.
- Ensure the gate or ramp is secure before lifting the Cage.
- Where possible, ensure the Cage is positioned on level ground.
- Do not drag the load; this equipment is for lifting the load clear of the ground.
- Thoroughly inspect the Cage for damage before use- see our recommended visual inspection list on page 15.

CHAIN ANGLES

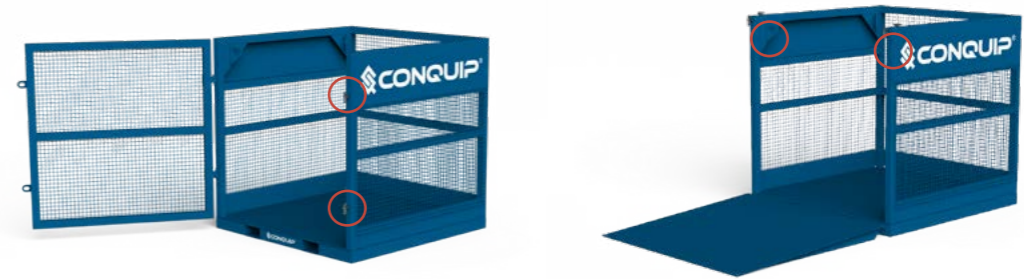
All Conquip goods and material lifting cages are designed to be used in conjunction with a four-leg lifting accessory.

To avoid overloading the lifting accessory, the angle from the vertical should not exceed 45 degrees. To prevent the load becoming unstable, angles less than 15 degrees should also be avoided.



LIFTING WITH A CRANE

01. Open the door or lower the ramp, depending on the version being used, by releasing the Antiluce fasteners on the Cage. For Gated Good Cages, the Antiluce fasteners are positioned on the opposite side to the gate's hinges. For Ramped Goods Cages, the Antiluce fasteners are positioned at the top, either side of the ramp.



02. Load the cage using available lifting apparatus or a pallet truck, ensuring the weight of the goods or materials is evenly distributed and centrally positioned, where possible. Do not overload the cage by weight or height; the load should be fully contained within the internal area of the Cage.



03. Sufficiently secure the load if there is room for movement within the Cage.
04. Once the supervisor is happy that the load is secure, balanced and does not exceed maximum loading weight, attach a suitably rated chain sling to the four lifting points in each of the corners of the cage.
05. Check that personnel are clear from the immediate area and the new location to allow for swing of the cage when lifting off the ground.
06. Raise the Cage just off the ground to visually check the load is balanced and secure. Crane-lift the Cage to the new location.
07. Check personnel are clear of the area to prevent 'hands-on' positioning and lower the Cage onto a firm, stable, flat surface.
08. Detach the four-leg lifting chain sling and unload the materials, using the door or ramp.
09. Once unloaded, close the door or raise the ramp, depending on the version being used, and secure it with the Antiluce fasteners. Reattach the four-leg lifting chain sling and check personnel are clear of the immediate area before lifting.

LIFTING WITH A FORKLIFT OR TELEHANDLER

01. Set the machine's forks to the correct width for the Goods Cage's fork pockets. Make sure that they are equidistant from the centre. Drive the machine to the Goods Cage, aligning the forks with the fork pockets.
02. Move the machine forward until the forks are fully inserted into the fork pockets. The Goods Cage is now ready to lift.
03. Carefully raise the Cage just off the ground and check for balance and security and slightly tilt the forks back towards the machine cab to prevent it sliding off the end.
04. Carefully transport the Cage to its required destination, taking care not to jolt. When in position, the Cage can be lowered onto firm, level ground.
05. Reverse the machine back and clear of the Goods Cage.

MAINTENANCE & INSPECTION

MAINTENANCE REGIME

- It is mandatory that the equipment is thoroughly examined regularly, by a qualified engineer, to ensure compliance with relevant regulations. Conquip recommend carrying out a thorough examination every six months.
- This equipment may incorporate various loose and detachable items including, but not limited to pins, bolt assemblies and adaption plates. Refer to the separate requirements for the safe use of those items.
- When not being used, store the unit in a clean, upright condition and in a safe place where it will be protected from thieves and unauthorised users.
- This equipment must be inspected by the responsible person before each use and then regularly, as determined by your risk assessment or working practice. If you have any concerns about the machinery's condition or suitability, do not use it.

VISUAL INSPECTION CHECKLIST

INSPECTION ITEMS	RESULTS		COMMENTS
	PASS	FAIL	
Serial Number			CQ.....
Product Code			
Working Load Limit (Kg)			
Conforms to user guide specification			
Check the lifting points for damage or distortion			
Check the fork pockets for damage or distortion			
Check the operation and security of the gate or ramp			
Check the spreader beam/door brace is fitted and secure, if applicable			
Check the mesh panel sides for bends and damage, particularly if there are any holes.			
Check the floor for bends or distortion			
Carry out a general visual inspection of the body			

SIGNATURE			
Name	Position	Qualification	Signature & Date

GENERAL SAFETY INSTRUCTIONS

The equipment should be properly operated and maintained to keep it in a safe, efficient operating condition. Be sure that all fixings and components are free of mud or other matter that might cause issues hazardous to the operator, service personnel or other personnel or equipment. Report all malfunctions to those responsible for maintenance, and do not operate the equipment until corrected. Normal service or maintenance performed as required can prevent unexpected and unnecessary downtime.

This operations manual describes general inspections, servicing and operation with the normal safety precautions required for normal servicing and operating conditions. It is not a guide, however, for abnormal conditions or situations. Service personnel and operators must be safety conscious and alert to recognise potential servicing or operating safety hazards at all times, and take necessary precautions to assure safe servicing and operation of the equipment.



M002
Refer to instructions manual



M004
Wear eye protection



M008
Wear safety footwear



M009
Wear protective gloves



M010
Wear protective clothing



M014
Wear head protection



M015
Wear high-visibility clothing

GENERAL NOTES

- Read this operations manual and learn the operating characteristics and limitations of the equipment. Know what operating clearances the machine requires.
- Read and understand all the safety signs prior to operation.
- If the safety signs are obstructed by dirt or debris, clean them using mild soap and water prior to operation.
- If the safety signs are damaged or illegible, replace them immediately, prior to operation.
- Be aware of operating hazards that weather changes can create on the job. Know proper procedures to follow when a severe rain or electrical storm strikes.
- Never attempt to operate or work on machinery when not feeling physically fit.
- Never wear loose clothing, rings, watches, heavy gloves etc., that might catch and result in injury.
- Know what safety equipment (PPE) is required and use it. Such equipment may be: hard hat, safety glasses, reflector type vests, protective gloves and safety footwear.

TERMS & CONDITIONS

CONQUIP ENGINEERING GROUP STANDARD PRODUCT WARRANTY

01. COMMENCEMENT

1.1 This Warranty shall commence on the Commencement Date and shall continue until the earlier of:

- (a) the Expiry Date; or
- (b) the date on which it may be voided in accordance with clause 4.1(b)

when it shall terminate automatically without notice.

02. DUTY OF GOOD FAITH

2.1 The Purchaser shall in the exercise of its rights under this Warranty and in the compliance with its obligations under this Warranty be subject to and shall in all respects owe and comply with a duty of good faith to the Warrantor.

03. NATURE AND EXTENT OF COVER

3.1 Subject to clause 3.2 the Warrantor agrees and undertakes to the Purchaser that it shall be liable to the Purchaser under and in accordance with the terms of this Warranty in the event that:

- (a) prior to the Expiry Date the Purchaser shall notify a Warranty Claim to the Warrantor; and
- (b) the Equipment or any relevant part of the Equipment shall have become unusable as the result of defective material or defective workmanship prior to the Expiry Date.

3.2 The Warrantor's obligation under clause 3.1 shall be expressly subject to the provisions of clauses 4, 5 and 6 and conditional upon the Purchaser's compliance in full with the provisions of clause 7.

04. RESTRICTIONS

4.1 The following restrictions apply to this Warranty:

(a) This Warranty is personal to the Purchaser and neither the legal benefit nor legal burden of this warranty may be assigned or novated or otherwise transferred by the Purchaser to any other party. Any purported assignment, novation or transfer shall not be binding upon the Warrantor.

(b) This Warranty shall be void in the event that the Purchaser:

(i) cannot provide authentic and original documentary evidence that the Purchaser has during the period between the Commencement Date and the Expiry Date complied with the Maintenance and Servicing Requirements; and/or

(ii) has, during the period between the Commencement Date and the Expiry Date, exceeded the Purchaser's Usage Cycle Parameters; and/or

(iii) has, during the period between the Commencement Date and the Expiry Date, exceeded the Purchaser's Use Parameters; and/or

(iv) has carried out, or procured the carrying out by any third party of, any repair to the Equipment or any part of the Equipment which is not an Authorised Repair; and/or

(v) has operated the Equipment after having replaced any part of the Equipment with a part which has not been supplied and fitted by the Warrantor; and/or

(vi) has modified the Equipment in any way prior to use.

05. EXCLUSIONS

5.1 The following are excluded from the scope of this Warranty:

(a) Loss of and/ or damage to the Equipment or any part of it resulting from any collision between the Equipment and any other fixed or stationary or mobile object whatsoever, irrespective of whether that collision was or was not caused by the Purchaser; and/or

(b) Loss of and/or damage to any personal property and/or possessions or other equipment not forming part of the Equipment but which is present in or about the Equipment; and/or

(c) loss and/or damage which is covered by any other insurance policy taken out and maintained by the Purchaser or in respect of which the Purchaser has a contractual obligation to do so; and/or

(d) loss and/or damage to the equipment which is consistent with the use by the Purchaser of the Equipment:

(i) in compliance with the Maintenance and Servicing Requirements; and

(ii) in compliance with the Usage Cycle Parameters; and

(iii) in compliance with the Use Parameters; and

(iv) having only carried out Authorised Repairs to the Equipment; and

(v) having all and any replacement parts fitted by the Warrantor; and

(vi) in unmodified form.

06. LIMITATION OF LIABILITY

6.1 The Warrantor's liability to the Purchaser shall be limited as follows:

- (a) The Warrantor shall not in any circumstances be liable to the Purchaser for indirect and/or consequential and/or economic loss suffered and/or incurred as the case may be by the Purchaser; and
- (b) The Warrantor shall only be liable to the Purchaser for the reasonable and proper costs reasonably and properly incurred by the Purchaser directly in connection with the repair and/or replacement (at the Warrantor's absolute discretion) of the Equipment or any part of the Equipment; and
- (c) The Warrantor's liability to the Purchaser shall notwithstanding any other provision of this Warranty, not in any circumstances exceed the Purchase Price of the Equipment.

07. WARRANTY CLAIMS

7.1 The Purchaser shall in respect of any claim against the Warrantor under this Warranty and within 24 hours of the occurrence of the subject matter of the Warranty Claim:

- (a) Complete in full and submit to the Warrantor a Warranty Claim in the form annexed to Schedule 4;
- (b) Provide date stamped or date identifiable photographs evidencing the claim; and
- (c) Make the Equipment or the relevant part of the Equipment available to the Warrantor for inspection within 48 hours of notification of the relevant Warranty Claim.

08. ENTIRE AGREEMENT

8.1 This Warranty constitutes the entire agreement between the parties and supersedes and extinguishes all previous promises, assurances, warranties, representations and understandings between them, whether written or oral, relating to its subject matter.

8.2 Each party agrees that it shall have no remedies in respect of any statement, representation, assurance or warranty (whether made innocently or negligently) that is not set out in this Warranty. Each party agrees that it shall have no claim for innocent or negligent misrepresentation or negligent misstatement based on any statement in this Warranty.

No variation of this Warranty shall be effective unless it is in writing and signed by the parties (or their authorised representatives).

09. WAIVER

No failure or delay by a party to exercise any right or remedy provided under this Warranty or by law shall constitute a waiver of that or any other right or remedy, nor shall it prevent or restrict the further exercise of that or any other right or remedy. No single or partial exercise of such right or remedy shall prevent or restrict the further exercise of that or any other right or remedy.

10. SEVERANCE

10.1 If any provision or part-provision of this Warranty is or becomes invalid, illegal or unenforceable, it shall be deemed deleted, but that shall not affect the validity and enforceability of the rest of this Warranty.

10.2 If any provision or part-provision of this Warranty is deemed deleted under clause 10.1 the parties shall negotiate in good faith to agree a replacement provision that, to the greatest extent possible, achieves the intended commercial result of the original provision.

11. THIRD PARTY RIGHTS

11.1 This Warranty does not give rise to any rights under the Contracts (Rights of Third Parties) Act 1999 to enforce any term of this Warranty.

12. GOVERNING LAW

12.1 This Warranty and any dispute or claim (including non-contractual disputes or claims) arising out of or in connection with it or its subject matter or formation shall be governed by and construed in accordance with the law of England and Wales.

13. JURISDICTION

13.1 Each party irrevocably agrees that the courts of England and Wales shall have exclusive jurisdiction to settle any dispute or claim (including non-contractual disputes or claims) arising out of or in connection with this Warranty or its subject matter or formation.

DESIGN CONFORMITY (EC & UK)

(01) This certificate meets the requirements of the Machinery Directive 2023/42/EC of the European Parliament and Council.

(02) This certificate meets the requirements of the Supply of Machinery (Safety) Regulations 2008.

DETAILS

NAME & ADDRESS OF MANUFACTURER:
Conquip Engineering Group Ltd, Unit 4, Waterbrook Estate, Alton, Hampshire. GU34 2UD

NAME & ADDRESS OF PERSON TO COMPILE TECHNICAL FILE:
Name: Daniel Critchley
Address: Conquip Engineering Group, Unit 4, Waterbrook Estate, Alton, Hampshire. GU34 2UD

NAME & ADDRESS OF AUTHORISED REPRESENTATIVE IF ONE HAS BEEN MANDATED BY THE MANUFACTURER:
N/A

NAME, ADDRESS, AND IDENTIFICATION NUMBER OF THE NOTIFIED BODY (01) OR APPROVED BODY (02), WHERE APPLICABLE:
N/A

EQUIPMENT DESCRIPTION

PRODUCT CODES	GENERAL DESCRIPTION / DESIGNATION	WORKING LOAD LIMIT
CA118AL-01638	Small Goods Cage With Gate Access	3000kg
CA124AL-01658	Small Goods Cage With Ramp Access	
CA118AL-03277	Large Goods Cage Gate Access	
CA124AK-03277	Large Goods Cage Ramp Access (Short Side)	
CA124AL-03277	Large Goods Cage Ramp Access (Long Side)	

HARMONISED STANDARDS & REGULATIONS

ITEM	CODE	DESCRIPTION
EC DIRECTIVE/REGULATION	2023/42/EC	Directive 2023/42/EC- new machinery directive
HARMONISED STANDARDS	BS EN ISO 12100:2010	Safety of machinery General principles for design Risk assessment and risk reduction
	BS EN 13155:2020	Crane Safety. Non-fixed load lifting attachments
	AS 4991-2004	Lifting Devices
OTHER REGULATIONS	LOLER 1998	Lifting Operations and Lifting Equipment Regulations 1998 (LOLER)
	PUWER 1998	Provision and Use of Work Equipment Regulations 1998 (PUWER)

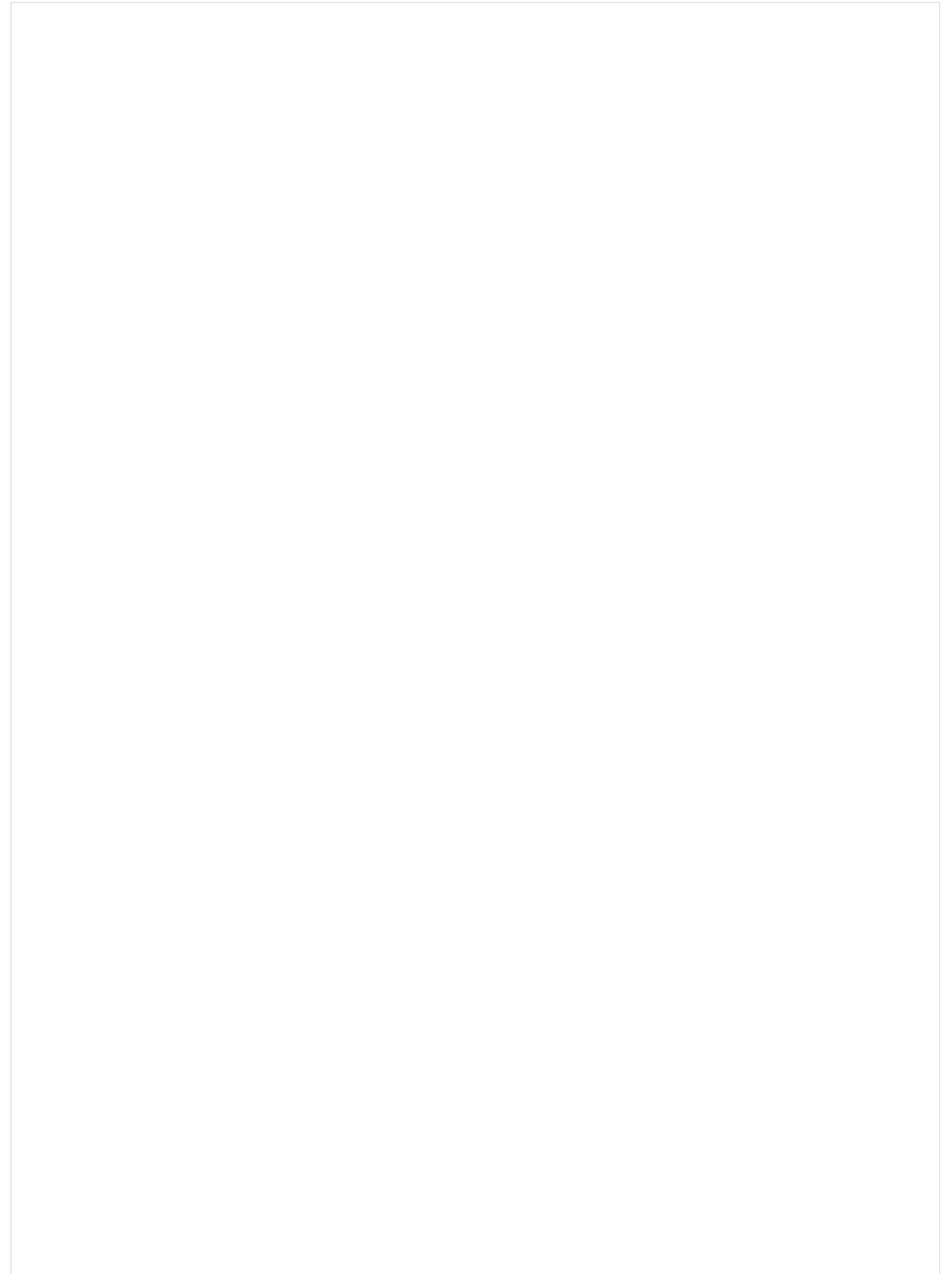
DECLARATION

PLACE OF DECLARATION:
Alton

DATE OF DECLARATION:
February 2026

I declare that the above equipment meets the Essential Health and Safety requirements of the
(01) Machinery Directive 2023/42/EC of the European Parliament and Council.
(02) Supply of Machinery (Safety) Regulations 2008 and Section 6 of the Health and Safety at Work Etc. Act 1974.

NAME:	POSITION:	SIGNATURE:
Daniel Critchley	Managing Director	



TALKING TO US IS EASY
WE'RE HERE TO HELP

Call us on 0333 300 3470
Email us at sales@cqegroup.com
www.cqegroup.com

