



# CIVILS & GROUNDWORKS



## YOUR #01 PARTNER

We supply a comprehensive range of equipment for ground support, deep drainage, utility installation and other civil engineering applications. Our experienced, in-house engineering team can support you from the pre-construction phase, right through to a project's completion.

**START  
EXPLORING**



# TRENCH BOX

A ground support system for lining trench walls.

- ✓ SIMPLE TO ASSEMBLE
- ✓ EASILY REPLACEABLE PARTS AND SPARES
- ✓ HIRE SERVICE AND IN-HOUSE TRANSPORT



- All Base and Extension boxes 3.5 metres in length.
- Extension boxes allow trench depths up to 5.18 metres and working widths up to 4 metres.
- Ancillaries include lifting and extraction chains, edge protection and trench access solutions.

### DID YOU KNOW?

We provide Edge Protection Panels free of charge with all Shoring Box hire orders.

LENGTH (mm)	HEIGHT BASE (mm)	HEIGHT EXTENSION (mm)	MAX TRENCH DEPTH (mm)	INTERNAL WIDTH (mm)		EXTERNAL WIDTH (mm)		WEIGHT BASE (kg)		WEIGHT EXTENSION (kg)		SWL** (kN/m <sup>2</sup> )	
				Min	Max	Min	Max	Min	Max	Min	Max	Min	Max
3500	2560	1310	5180*	550	3985	766	4201	2177	2611	1163	1180	30	50

\*Based on a Base box with 2no. Extension boxes, greater depths may be achievable with a bespoke design.  
\*\*Safe Working Load



SEE IT IN ACTION

# MANHOLE BOX

A ground support system for forming a concrete manhole.

- ✓ AVAILABLE IN 2.5, 3.5, AND 4-METRE LENGTHS
- ✓ EXTENSIONS ALLOW DEPTHS UP TO 5.18 METRES
- ✓ LIFTING ATTACHMENTS AND END PANELS ANCILLARIES



### NEED SOMETHING EXTRA?

Conquip provide a range of technical information and installation support, including:

- User Guides with step by step instructions.
- Assembly, installation and extraction videos.

LENGTH (mm)	HEIGHT BASE (mm)	HEIGHT EXTENSION (mm)	MAX TRENCH DEPTH (mm)	INTERNAL WIDTH (mm)		EXTERNAL WIDTH (mm)		WEIGHT BASE (kg)		WEIGHT EXTENSION (kg)		SWL** (kN/m <sup>2</sup> )	
				Min	Max	Min	Max	Min	Max	Min	Max	Min	Max
2500	2560	1310	5180*	1550	4990	1770	5200	2557	3011	1433	1650	45	70
3500	2560	1310	5180*	1550	4990	1770	5200	3077	3511	1713	1930	32	50
4000	2560	1310	5180*	1550	4990	1770	5200	3327	3761	1813	2030	28	40

\*Based on a Base box with 2no. Extension boxes, greater depths may be achievable with a bespoke design.  
\*\*Safe Working Load



SCAN TO FIND OUT MORE

## EDGE PROTECTION

A safety system to prevent personnel falling into shoring excavations.



TYPE	CODE	LENGTH (mm)	WIDTH (mm)	HEIGHT (mm)	WEIGHT (kg)
Panel	EP100-00001	1790	130	1170	25
Telescopic Clamp	EP100-00002	1790	130	340	5.6
Pole	EP100-00003	470	75	340	5.5



## TRENCH ACCESS PLATFORM

A gated platform providing safe access to a trench via an access ladder.



CODE	LENGTH (mm)	WIDTH (mm)	HEIGHT (mm)	WEIGHT (kg)
EP100-00005	885	600	1060	97



## END PANELS

A structural steel panel to close off open-ended excavations.



TYPE	CODE	LENGTH (mm)	WIDTH (mm)	HEIGHT (mm)	WEIGHT (kg)	SWL* (kN/M <sup>2</sup> )
Small	TL900105	1800	60	1200	200	60
Large	TL900136	2800	100	1800	875	100

\*Safe Working Load

## DAVIT FALL ARREST SYSTEM

A means of rescue for workers in trenches and confined spaces.



CODE	HEIGHT (mm)		HEIGHT TO PIVOT (mm)	REACH (mm)		MAX ANGLE	THROAT WIDTH (mm)	WEIGHT (kg)	WLL* (kg)
	MIN	MAX		MIN	MAX				
PE136	2794	3023	2235	495	737	135°	5 – 131	60	150

\*Working Load Limit

# EXCAVATOR MECHANICAL PIPE LIFTER

An excavator attachment with a grip and release system.

- ✓ 4T AND 6T SIZES AVAILABLE
- ✓ ACCURATE PIPE PLACEMENT, EVERY TIME
- ✓ NO OPERATIVES IN TRENCH DURING PIPE PLACEMENT

Promotes safe pipe laying as the mechanism grips the pipe until it is placed. Rubber buffers prevent pipe damage and the removable stand ensures easy connection to the excavator, while also accommodating narrow trenches.



CODE	LENGTH (mm)	WIDTH (mm)	HEIGHT (mm)	LOWER BOOM LENGTH (mm)	CLAMPING ARM LENGTH (mm)	WEIGHT (kg)	WLL* (kg)	COMPATIBILITY (tonne excavators)
EA015-04000	1920	1420	1770	1300	480	590	4000	13 - 22
EA015-06000	1940	1460	1910	1309	470	910	6000	30 - 50

\*Working Load Limit



# EXCAVATOR DRAG SKIP

A large, flat based skip, dragged across site by an excavator.

- ✓ IDEAL FOR BACKFILLING TRENCHES AFTER PIPE LAYING
- ✓ PREVENTS UP TO ¾ CUBE OF MATERIAL WASTAGE PER LOAD
- ✓ REDUCES DOWNTIME TRACKING BACK AND FORTH FROM STOCKPILES

Sometimes referred to as a stone-saver or shingle bin, it is used to transport shingle, saved material for back-fill, and other bulk aggregates across site to the work area.



CODE	LENGTH (mm)	WIDTH (mm)	HEIGHT (mm)	WEIGHT (kg)	CAPACITY (litres)	MAX HEAPED FILL (litres)
GS003AD-04500	3450	1835	1675	1530	4500	5250
GS003AD-07500	4450	2135	1735	2110	7500	8850
GS003AD-09500	5500	2135	1735	2570	9500	11250



## EXCAVATOR PIPE LAYING HOOK

An excavator attachment used for fast and safe handling of pipe sections.

Ideal for unloading delivery trucks quickly and safely, this attachment is compatible with 13-50 tonne excavators to accommodate any size of concrete pipe section.



CODE	LENGTH (mm)	WIDTH (mm)	HEIGHT (mm)	BOOM LENGTH (mm)	WEIGHT (kg)	WLL* (kg)	COMPATIBILITY (tonne excavators)
EA012-04000**	2910	500	600	1800	290	4000	13 - 22
EA012-08500	3010	690	750	1870	400	8500	30 - 50

\*Working Load Limit  
\*\*Cylindrical design

## MECHANICAL MANHOLE RING LIFTER

An adjustable grab for lifting manhole rings, cones and base units.

A unique clamping and release mechanism for a crane or other similar lifting equipment. It is operated by the machine driver, allowing all personnel to be safely away from the working area.



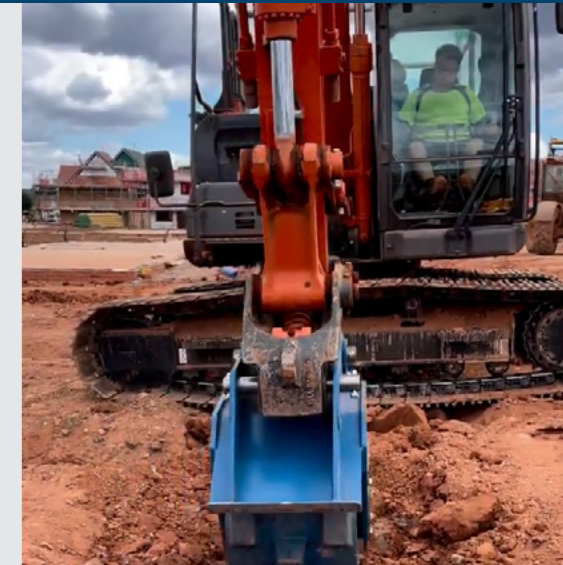
CODE	LENGTH (mm)	WIDTH (mm)	HEIGHT (mm)	WEIGHT (kg)	WLL* (kg)	CLAMP RANGE (mm)
CA212-02500	1225	1075	1225	110	2500	800-1500 800-1800**

\*Working Load Limit  
\*\*Clamp range with extensions

## EXCAVATOR COMPACTION WHEEL

An excavator attachment for compacting ground material.

- ✓ USES EXCAVATOR'S WEIGHT TO DELIVER FORCE
- ✓ INTEGRATED STAND FOR UPRIGHT STORAGE
- ✓ NO MOTOR OR HYDRAULIC CONNECTIONS REQUIRED



The Excavator Compaction Wheel reduces voids in ground material and increases its density, providing the surface with load-bearing strength.

CODE	LENGTH (mm)	WIDTH (mm)	HEIGHT (mm)	WEIGHT (kg)	COMPACTION WIDTH (mm)	COMPATIBILITY (tonne excavators)
EA023-02000	1010	630	1070	510	500	13-22

## EXCAVATOR POURING BUCKET

Transports and pours concrete and other materials.

- ✓ COMPATIBLE WITH 5-50 TONNE EXCAVATORS
- ✓ FUNNELLED DESIGN FOR ACCURATE POUR
- ✓ FILL DIRECT FROM CONCRETE TRUCK
- ✓ PERFECT FOR FOUNDATION WORK



Ideal for housebuilding sites as excavators can access areas a concrete truck is unable to. Filled straight from the truck, it can pour foundations, columns, slabs and other applications.

CODE	LENGTH (mm)	WIDTH (mm)	HEIGHT (mm)	WEIGHT (kg)	WLL* (kg)	CAPACITY (litres)	COMPATIBILITY (tonne excavators)
EA014-00380	1520	640	1075	155	1000	380	5 - 9
EA014-00700	1775	1020	1210	450	2100	700	13 - 22
EA014-01200	2285	1320	1220	625	3600	1200	13 - 22
EA014-01300	2490	1450	1330	730	3900	1300	30 - 50

\*Working Load Limit

## EXCAVATOR FORKS

Easily transport materials and equipment around site.

- ✓ COMPATIBLE WITH 5-50 TONNE EXCAVATORS
- ✓ ENHANCED VISIBILITY
- ✓ FLOATING FORKS
- ✓ TURNS AN EXCAVATOR INTO A TELEHANDLER



CODE	LENGTH (mm)	WIDTH (mm)	HEIGHT (mm)	WEIGHT (kg)	WLL* (kg)	COMPATIBILITY (tonne excavators)
EA010-01000	1930	1010	540	195	1000	5- 9
EA010-02500	2310	1225	620	375	2500	13-22
EA010-04000	2740	1390	745	540	4000	30- 50

\*Working Load Limit

## EXCAVATOR BUCKET BOX

Stillage for transporting buckets around site.

- ✓ ELIMINATES DOWNTIME TRACKING TO AND FROM BUCKET COMPOUND
- ✓ KEEPS BUCKETS SAFELY STORED WHEN NOT IN USE
- ✓ PREVENTS REPLACEMENT CHARGES FROM LOST BUCKETS



CODE	LENGTH (mm)	WIDTH (mm)	HEIGHT (mm)	WEIGHT (kg)	WLL* (kg)	COMPATIBILITY (tonne excavators)
EA019-02000	2200	2380	880	960	2000	13-22

\*Working Load Limit



SEE IT IN ACTION FOR AD BLY

## KERB GRIPPER

A multi-functional scissor kerb lifter, typically used to lay 'HB kerbs' or slabs.



CODE	LENGTH (mm)	WIDTH (mm)	HEIGHT (mm)	GRIP RANGE (mm)	WEIGHT (kg)	WLL* (kg)
MH704-00100	1560	570	500	500-1100	11.5	100

\*Working Load Limit

## BLOCK GRAB

Transports bricks and blocks around site.

CODE	LENGTH (mm)	WIDTH (mm)	INTERNAL HEIGHT (mm)	WEIGHT (kg)	WLL* (kg)
CA105-00800	1560	1200	800	250	1800
CA105-01000	1560	1200	1000	270	1800

\*Working Load Limit



# STATIC FUEL BOWSER

A fully bunded, high-quality fuel tank for storage of diesel and other fuels on site.

- ✓ HAND OR ELECTRIC PUMP OPTIONS
- ✓ 110% DOUBLE WALLED TANK
- ✓ CRANE LIFTING POINTS AND 4-WAY FORK POCKETS

The Static Fuel Bowser enables sites to cut back on fuel delivery waiting times as fuel is safely stored safely on site.



TYPE	CODE	LENGTH (mm)	WIDTH (mm)	HEIGHT (mm)	EMPTY WEIGHT (kg)	FULL WEIGHT (kg)	CAPACITY (litres)
Hand/ Electric	FB602-00950	1150	1150	1320	370	1270	880
Hand/ Electric	FB602-02000	2300	1150	1350	700	2500	2000

# WHEEL WASH

Cost-effective wheel cleaning system for construction sites.

The Wheel Wash is ideal for heavy machinery and delivery or muck away vehicles, ensuring that local roads are kept clean and site roadways are clear of mud.

CODE	LENGTH (mm)	WIDTH (mm)	HEIGHT (mm)	WEIGHT (kg)	WLL* (kg)
SS700-00044	19960	3100	1480	5550	44000

\*Working Load Limit



# FUEL ECO-HUB

Solar-powered, secure, central hub for refuelling.

- ✓ RECORDS FUEL USAGE DATA ONLINE
- ✓ PREVENTS FUEL THEFT
- ✓ IDEAL FOR REMOTE SITES

## DID YOU KNOW?

You can customise your Fuel Eco-Hub to suit your on-site needs:

- 3000-litre fuel tank.
- Electronic tank level monitor.
- IBC for Ad Blue storage.
- Electric dispensing pump for Ad Blue.



CODE	LENGTH (mm)	WIDTH (mm)	HEIGHT (mm)	WEIGHT* (kg)	FUEL BOWSER CAPACITY (litres)
ST140-16000	2940	2570	2830	2400*	2000*

\*Combined weight of the container and 2000-litre Fuel Bowser (empty) but this may be subject to change depending on your configuration.



LEARN MORE!



## ROAD PLATES

Ensure safe and efficient access across uneven terrains with our durable road plates. Available in standard and anti-skid versions.



TYPE	CODE	LENGTH (mm)	WIDTH (mm)	THICKNESS*	WEIGHT (kg)
STANDARD	SS520-01440	1200	1200	19.77mm / 3/4"	226
STANDARD	SS520-02880	2400	1200	19.77mm / 3/4"	452
ANTI-SKID	SS520AB-02880	2400	1200	19.77mm / 3/4"	452

\*Manufacturing tolerances mean the width and length could vary by 10mm +/- and the thickness by 2mm +/-

## POWERBRUSH FORKLIFT SWEEPER

Cleans, collects, suppresses dust.

- ✓ QUICK AND EASY TO USE
- ✓ DRIP FEED OR PRESSURISED WATER OPTIONS
- ✓ OPTIONAL KERB BRUSH AVAILABLE
- ✓ SAVE COST ON UNRELIABLE ROAD SWEEPER HIRE

Simple to use and inexpensive to maintain, the Powerbrush Forklift Sweeper keeps sites tidy and reduces dust pollution, creating a safer environment for site operatives and the general public.

**HYDRAULIC COUPLINGS:** Our team will confirm the type of hydraulic couplings to fit the machine on your site.



ITEM	CODE	LENGTH (mm)	WIDTH (mm)	HEIGHT (mm)	WEIGHT (kg)	TANK CAPACITY (litres)
STANDARD - DRIP FEED	SA800-02100	2180	2340	1260	560	250
PRESSURISED WATER SPRAY	SA800-02100	2180	2340	1260	560	250
ANY + KERB BRUSH	SA800-02100	2300	2700	1260	585	250

## AUTOLOCK TIPPING SKIP

Easily transport waste material around site.

- ✓ SELF-TIPPING
- ✓ SAFE AND FAST
- ✓ NEXT-DAY DELIVERY

### CUSTOMISE IT:

- Available in 500L or 1200L sizes.
- Add lifting eyes, castors, or both.
- Colour code for waste segregation.



ITEM	CODE	LENGTH (mm)	WIDTH (mm)	HEIGHT (mm)	WEIGHT (kg)	WLL* (kg)	CAPACITY (litres)
Standard Autolock 500	FA800-00500	1400	920	934	125	1000	500
Autolock With Castors 500	FA801-00500	1400	989	1023	160	1000	500
Cranelift Autolock 500	CA128-00500	1400	920	1050	130	1000	500
Cranelift Autolock With Castors 500	CA134-00500	1400	989	1138	165	1000	500
Standard Autolock 1200	FA800-01200	1818	1224	964	150	2000	1200
Autolock With Castors 1200	FA801-01200	1818	1224	1051	185	2000	1200
Cranelift Autolock 1200	CA128-01200	1818	1224	1078	155	1000	1200
Cranelift Autolock With Castors 1200	CA134-01200	1818	1224	1160	190	1000	1200

\*Working Load Limit





# WHY CHOOSE CONQUIP?

## NEXT-LEVEL SUPPORT

FOR YOU & YOUR PROJECT

- ✓ ON-SITE SERVICING
- ✓ DIRECT-TO-END USER
- ✓ NATIONWIDE REACH
- ✓ UK MANUFACTURING

### PLUS:

- Equipment repair and recycling.
- Spare parts.
- FORS Gold Delivery.
- Hire service.



## GET IN TOUCH

Call us on 0333 300 3470  
Email us at [sales@cqegroup.com](mailto:sales@cqegroup.com)  
[www.cqegroup.com](http://www.cqegroup.com)



Copyright © 2023 Conquip Engineering Group. All Rights Reserved.



SEE HOW ELSE WE CAN HELP